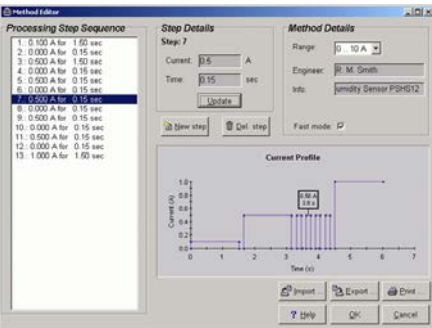


PS2 CONTROL SOFTWARE FOR WINDOWS NT, 2000 AND XP

PRODUCT INFORMATION SHEET

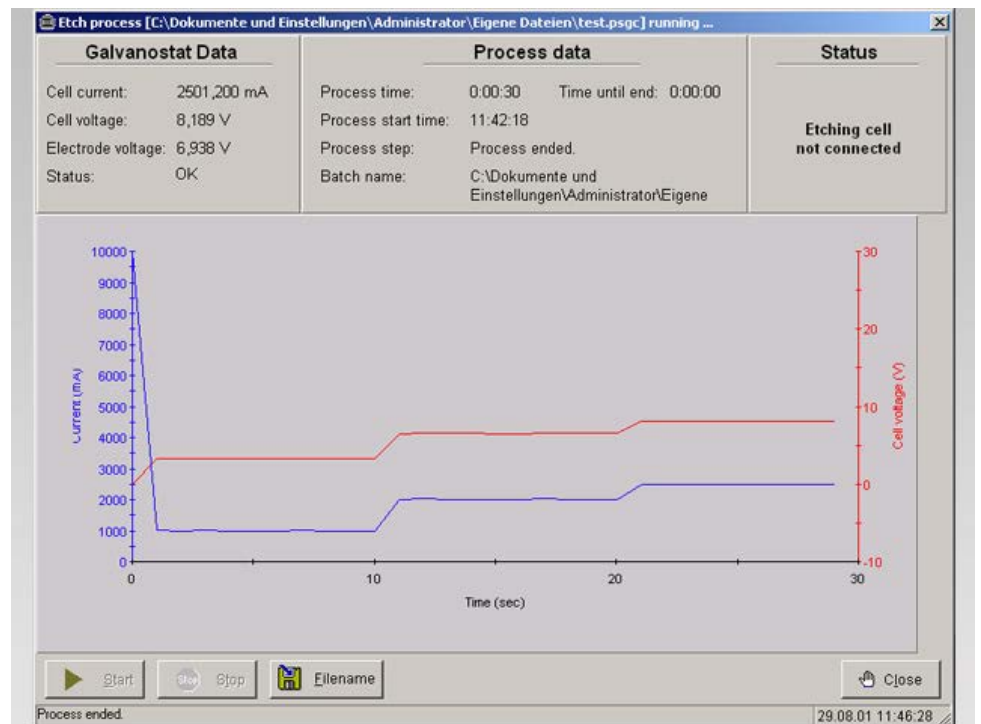


Screenshot of
the current profile editor



Computer control is one of the main features of AMMT's Porous Silicon Power Supply PS2. Each PS2 comes with Windows based software, dedicated to control a porous silicon etching process. It allows one to:

- define and edit time-based current profiles for etching,
- change all PS2 parameters in real-time,
- monitor all relevant information during the etching process and to store it in data files,
- print and store concise reports for each etching process.



Screenshot of the process control window.

上海办事处：
 皓赫科学仪器（上海）有限公司
 Tel： 400-840-1510
<http://www.bihec.com/advanced-micromachining-tools>

AMMT

We want to ensure that we have close contact with our customers. If you have any questions or special requirements, please do not hesitate to get in touch with us. This product information sheet is for general information purposes only. The product descriptions and the content of this document are not a substitute for our instructions in the product manual.

Specifications contained in these pages are subject to ongoing change due to progress in research and development. AMMT reserves the right to update or modify any information without notice. This also applies to improvements and/or modifications to the products described herein. AMMT is not subject to any obligations with respect to products or services. AMMT's product information sheets do not contain any representations or warranties. All technical specifications and price information are subject to change without notice.

Copyrights 1997 - 2016 AMMT GmbH. All Rights reserved.